



Industry Status: Computer Hardware

1 week 10/05/23 to 10/12/23								
9Weakest	8VWeak	7Weaker	6Weak	5Avg	4Strong	3Stronger	2VStrong	1Strongest
.	.	.	32 HARDWARE->	32 HARDWARE->
1 Systems	.	.	10 Peripherals->	10 Peripherals->
.	5 Storage	.	.	.
.	4 Dvrsified Sys	.	.	.
.	.	.	11 Networking
.	.	.	.	1 PCs->	1 PCs->	1 PCs->	.	.
.
.

October 12, 2023

UP +1 to AVERAGE strength rating
(5th strongest of 9 levels),
previous move was DOWN

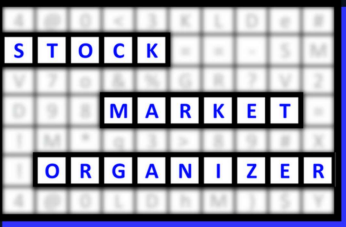


Table of Contents

1	1. INDUSTRY OVERVIEW	
		1A. Performance
		1B. Background
2	2. SUB-INDUSTRIES AND STOCK DETAIL	
		2A. Sub-Industries Overview
		2B. Sub-Industries 10-Week Strengthening Analysis
		2C. Stocks 1 Week Strongest and Weakest
5	3. STRENGTH BY LOOKBACK PERIOD (with Best/Worst stocks)	
		3A. Lookback 6 Months
		3B. Lookback 4 weeks
		3C. Lookback 1 Week

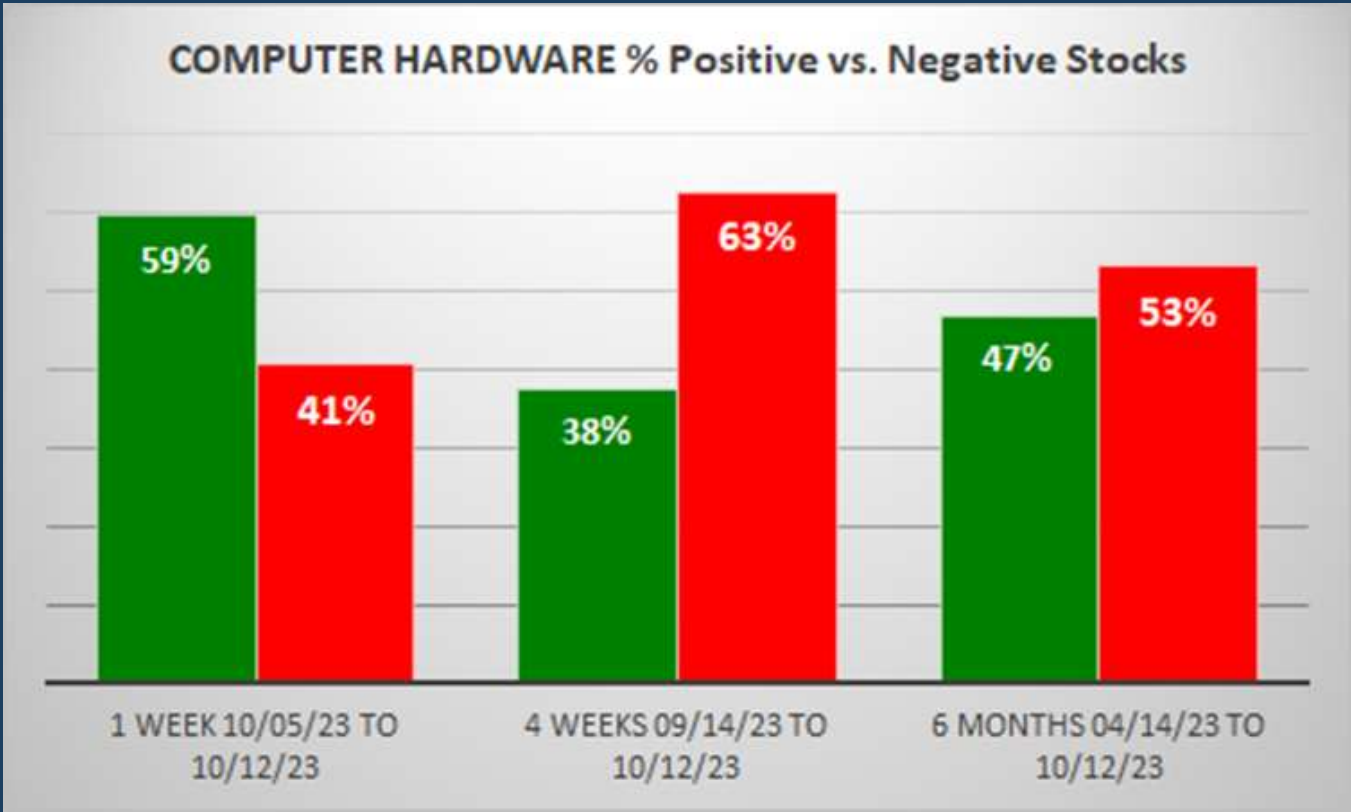
1. INDUSTRY OVERVIEW

1A. Performance

Past 10 Weeks Strengthening/Weakening week-by-week, per the following chart:

9Weakest	8VWeak	7Weaker	6Weak	5Avg	4Strong	3Stronger	2VStrong	1Strongest	Period
.	.	.	32 HARDWARE->	32 HARDWARE->	7 Days - 10/05/23 to 10/12/23
.	.	.	32 HARDWARE	7 Days - 09/28/23 to 10/05/23
.	.	.	32 HARDWARE	7 Days - 09/21/23 to 09/28/23
.	.	.	<-HARDWARE 32	<-HARDWARE 32	7 Days - 09/14/23 to 09/21/23
.	.	.	.	32 HARDWARE	7 Days - 09/07/23 to 09/14/23
.	.	.	.	32 HARDWARE	7 Days - 08/31/23 to 09/07/23
.	.	.	.	32 HARDWARE	7 Days - 08/24/23 to 08/31/23
.	.	.	.	32 HARDWARE	7 Days - 08/17/23 to 08/24/23
.	.	.	.	32 HARDWARE	7 Days - 08/10/23 to 08/17/23
.	.	.	.	<-HARDWARE 32	<-HARDWARE 32	.	.	.	7 Days - 08/03/23 to 08/10/23

STRENGTHENING 1 Week vs. Mid- and Longer-Term // 1 week positive/negative stocks ratio is HIGHER than both 4 weeks and 6 Months, per the following chart:



1B. Background

Largest of 6 sub-industries (32 stocks, average 5):

- * Networking & Communication Dev (11 stocks)
- * Computer Peripherals (10 stocks)

Top 10 by Market Capitalization:

AAPL/Apple Inc, CSCO/Cisco Systems Inc, PANW/Palo Alto Networks Inc., ANET/Arista Networks Inc, CDW/CDW Corporation, HPQ/Hp Inc, NTAP/Netapp Inc, SMI/Super Micro Computer Inc, WDC/Western Digital Corp, STX/Seagate Technology Holdings PLC

2. SUB-INDUSTRIES AND STOCKS DETAIL

2A. Sub-Industries Overview

Strengthened: 2/6 sub-industries

Weakened: 0/6 sub-industries

STRONGEST at Stronger rating/3rd strongest of 9 levels:

- * Personal Computers (1 stock)

WEAKEST at Weakest rating/9th strongest of 9 levels:

- * Computer Based Systems (1 stock)

2B. Sub-Industries 10-Week Strengthening Analysis

What: recent week-by-week strength changes for the industry and each underlying sub-industry

Why: objective measurement of strengthening and weakening enabling comparison within and across industries and sub-industries

INDUSTRY CURRENT PERIOD SUMMARY										1 week 10/05/23 to 10/12/23									
Length - Begin/End	Industry/Sub-Industry	Period	#	Min	Avg	Max	Status	Wweakest	BVWeak	ZWeaker	6Week	5Avg	4Strong	3Stronger	2VStrong	1Strongest			
7 Days - 10/05/23 to 10/12/23	COMPUTER HARDWARE	Period 1 of 10 (Current)	32	-1%	1%	10%	Strengthened				32 HARDWARE->	32 HARDWARE->							
7 Days - 10/05/23 to 10/12/23	COMPUTER HARDWARE - Computer Based Systems	Period 1 of 10 (Current)	1	-2%	-2%	-2%	Unchanged	1 Systems											
7 Days - 10/05/23 to 10/12/23	COMPUTER HARDWARE - Computer Peripherals	Period 1 of 10 (Current)	10	-1%	0%	7%	Strengthened				10 Peripherals->	10 Peripherals->							
7 Days - 10/05/23 to 10/12/23	COMPUTER HARDWARE - Data Storage Devices	Period 1 of 10 (Current)	5	-3%	1%	4%	Unchanged						5 Storage						
7 Days - 10/05/23 to 10/12/23	COMPUTER HARDWARE - Diversified Computer Systems	Period 1 of 10 (Current)	4	-1%	2%	4%	Unchanged						4 Diversified Sys						
7 Days - 10/05/23 to 10/12/23	COMPUTER HARDWARE - Networking & Communication Dev	Period 1 of 10 (Current)	11	-1%	1%	10%	Strengthened				11 Networking								
7 Days - 10/05/23 to 10/12/23	COMPUTER HARDWARE - Personal Computers	Period 1 of 10 (Current)	1	-3%	3%	3%	Strengthened				1 PCs->	1 PCs->	1 PCs->						
7 Days - 10/05/23 to 10/12/23		Period 1 of 10 (Current)																	
7 Days - 10/05/23 to 10/12/23		Period 1 of 10 (Current)																	
PREVIOUS WEEKS (EDUCATIONAL PURPOSES ONLY/NOT A STOCK OR INVESTMENT RECOMMENDATION)																			
Length - Begin/End	Industry/Sub-Industry	Period	#	Min	Avg	Max	Status	Wweakest	BVWeak	ZWeaker	6Week	5Avg	4Strong	3Stronger	2VStrong	1Strongest			
7 Days - 10/05/23 to 10/12/23	COMPUTER HARDWARE	Period 1 of 10 (Current)	32	-1%	1%	10%	Strengthened				32 HARDWARE->	32 HARDWARE->							
7 Days - 09/28/23 to 10/05/23	COMPUTER HARDWARE	Period 2 of 10	32	-3%	-2%	7%	Unchanged				32 HARDWARE								
7 Days - 09/21/23 to 09/28/23	COMPUTER HARDWARE	Period 3 of 10	32	-1%	0%	16%	Unchanged				32 HARDWARE								
7 Days - 09/14/23 to 09/21/23	COMPUTER HARDWARE	Period 4 of 10	32	-1%	-4%	3%	Weakened				<-HARDWARE 32	<-HARDWARE 32							
7 Days - 09/07/23 to 09/14/23	COMPUTER HARDWARE	Period 5 of 10	32	-3%	-3%	3%	Strengthened				32 HARDWARE								
7 Days - 08/31/23 to 09/07/23	COMPUTER HARDWARE	Period 6 of 10	32	-1%	-2%	6%	Weakened				32 HARDWARE								
7 Days - 08/24/23 to 08/31/23	COMPUTER HARDWARE	Period 7 of 10	32	-3%	-4%	13%	Strengthened				32 HARDWARE								
7 Days - 08/17/23 to 08/24/23	COMPUTER HARDWARE	Period 8 of 10	32	-1%	0%	13%	Weakened				32 HARDWARE								
7 Days - 08/10/23 to 08/17/23	COMPUTER HARDWARE	Period 9 of 10	32	-1%	-3%	5%	Weakened				32 HARDWARE								
7 Days - 08/03/23 to 08/10/23	COMPUTER HARDWARE	Period 10 of 10	32	-1%	-2%	16%	Weakened				<-HARDWARE 32	<-HARDWARE 32							
7 Days - 10/05/23 to 10/12/23	COMPUTER HARDWARE - Computer Based Systems	Period 1 of 10 (Current)	1	-2%	-2%	-2%	Unchanged	1 Systems											
7 Days - 09/28/23 to 10/05/23	COMPUTER HARDWARE - Computer Based Systems	Period 2 of 10	1	-3%	-3%	-3%	Unchanged	1 Systems											
7 Days - 09/21/23 to 09/28/23	COMPUTER HARDWARE - Computer Based Systems	Period 3 of 10	1	-1%	-1%	-11%	Weakened	<-Systems 1	<-Systems 1	<-Systems 1									
7 Days - 09/14/23 to 09/21/23	COMPUTER HARDWARE - Computer Based Systems	Period 4 of 10	1	-3%	-6%	-6%	Unchanged			1 Systems									
7 Days - 09/07/23 to 09/14/23	COMPUTER HARDWARE - Computer Based Systems	Period 5 of 10	1	-2%	-2%	-2%	Unchanged			1 Systems									
7 Days - 08/31/23 to 09/07/23	COMPUTER HARDWARE - Computer Based Systems	Period 6 of 10	1	-2%	-2%	-2%	Unchanged			1 Systems									
7 Days - 08/24/23 to 08/31/23	COMPUTER HARDWARE - Computer Based Systems	Period 7 of 10	1	-2%	-2%	-2%	Unchanged			1 Systems									
7 Days - 08/17/23 to 08/24/23	COMPUTER HARDWARE - Computer Based Systems	Period 8 of 10	1	-2%	-9%	-9%	Weakened			<-Systems 1	<-Systems 1								
7 Days - 08/10/23 to 08/17/23	COMPUTER HARDWARE - Computer Based Systems	Period 9 of 10	1	-3%	-5%	-5%	Unchanged			1 Systems									
7 Days - 08/03/23 to 08/10/23	COMPUTER HARDWARE - Computer Based Systems	Period 10 of 10	1	-3%	1%	1%	Unchanged			1 Systems									
7 Days - 10/05/23 to 10/12/23	COMPUTER HARDWARE - Computer Peripherals	Period 1 of 10 (Current)	10	-2%	0%	7%	Strengthened				10 Peripherals->	10 Peripherals->							
7 Days - 09/28/23 to 10/05/23	COMPUTER HARDWARE - Computer Peripherals	Period 2 of 10	10	-2%	0%	5%	Strengthened				10 Peripherals								
7 Days - 09/21/23 to 09/28/23	COMPUTER HARDWARE - Computer Peripherals	Period 3 of 10	10	-4%	-1%	7%	Weakened				10 Peripherals								
7 Days - 09/14/23 to 09/21/23	COMPUTER HARDWARE - Computer Peripherals	Period 4 of 10	10	-2%	3%	3%	Unchanged				10 Peripherals								
7 Days - 09/07/23 to 09/14/23	COMPUTER HARDWARE - Computer Peripherals	Period 5 of 10	10	-2%	-1%	3%	Unchanged				10 Peripherals								
7 Days - 08/31/23 to 09/07/23	COMPUTER HARDWARE - Computer Peripherals	Period 6 of 10	10	-4%	-2%	3%	Weakened				<-Peripherals 10	<-Peripherals 10							
7 Days - 08/24/23 to 08/31/23	COMPUTER HARDWARE - Computer Peripherals	Period 7 of 10	10	-2%	3%	9%	Strengthened				10 Peripherals->	10 Peripherals->							
7 Days - 08/17/23 to 08/24/23	COMPUTER HARDWARE - Computer Peripherals	Period 8 of 10	10	-4%	-1%	4%	Weakened				<-Peripherals 10	<-Peripherals 10							
7 Days - 08/10/23 to 08/17/23	COMPUTER HARDWARE - Computer Peripherals	Period 9 of 10	10	-2%	-2%	5%	Weakened				10 Peripherals								
7 Days - 08/03/23 to 08/10/23	COMPUTER HARDWARE - Computer Peripherals	Period 10 of 10	10	-2%	0%	14%	Strengthened				10 Peripherals								
7 Days - 10/05/23 to 10/12/23	COMPUTER HARDWARE - Data Storage Devices	Period 1 of 10 (Current)	5	-3%	1%	4%	Unchanged							5 Storage					
7 Days - 09/28/23 to 10/05/23	COMPUTER HARDWARE - Data Storage Devices	Period 2 of 10	5	-2%	0%	1%	Unchanged							5 Storage					
7 Days - 09/21/23 to 09/28/23	COMPUTER HARDWARE - Data Storage Devices	Period 3 of 10	5	0%	2%	3%	Unchanged							5 Storage					
7 Days - 09/14/23 to 09/21/23	COMPUTER HARDWARE - Data Storage Devices	Period 4 of 10	5	-2%	-3%	2%	Weakened							<-Storage 5	<-Storage 5				
7 Days - 09/07/23 to 09/14/23	COMPUTER HARDWARE - Data Storage Devices	Period 5 of 10	5	-3%	-1%	1%	Unchanged								5 Storage				
7 Days - 08/31/23 to 09/07/23	COMPUTER HARDWARE - Data Storage Devices	Period 6 of 10	5	-3%	-2%	6%	Weakened								5 Storage				
7 Days - 08/24/23 to 08/31/23	COMPUTER HARDWARE - Data Storage Devices	Period 7 of 10	5	-2%	2%	13%	Strengthened							5 Storage->	5 Storage->				
7 Days - 08/17/23 to 08/24/23	COMPUTER HARDWARE - Data Storage Devices	Period 8 of 10	5	-2%	0%	2%	Weakened							<-Storage 5	<-Storage 5				
7 Days - 08/10/23 to 08/17/23	COMPUTER HARDWARE - Data Storage Devices	Period 9 of 10	5	-4%	-3%	0%	Unchanged							5 Storage					
7 Days - 08/03/23 to 08/10/23	COMPUTER HARDWARE - Data Storage Devices	Period 10 of 10	5	-7%	-3%	-2%	Weakened							5 Storage					
7 Days - 10/05/23 to 10/12/23	COMPUTER HARDWARE - Diversified Computer Systems	Period 1 of 10 (Current)	4	-1%	2%	4%	Unchanged							4 Diversified Sys					
7 Days - 09/28/23 to 10/05/23	COMPUTER HARDWARE - Diversified Computer Systems	Period 2 of 10	4	-1%	1%	3%	Weakened							4 Diversified Sys					
7 Days - 09/21/23 to 09/28/23	COMPUTER HARDWARE - Diversified Computer Systems	Period 3 of 10	4	-3%	0%	4%	Strengthened							4 Diversified Sys					
7 Days - 09/14/23 to 09/21/23	COMPUTER HARDWARE - Diversified Computer Systems	Period 4 of 10	4	-3%	-3%	-2%	Weakened							4 Diversified Sys					
7 Days - 09/07/23 to 09/14/23	COMPUTER HARDWARE - Diversified Computer Systems	Period 5 of 10	4	-3%	-2%	1%	Unchanged							4 Diversified Sys					
7 Days - 08/31/23 to 09/07/23	COMPUTER HARDWARE - Diversified Computer Systems	Period 6 of 10	4	-4%	-1%	1%	Unchanged							4 Diversified Sys					
7 Days - 08/24/23 to 08/31/23	COMPUTER HARDWARE - Diversified Computer Systems	Period 7 of 10	4	-3%	-6%	9%	Weakened							4 Diversified Sys					
7 Days - 08/17/23 to 08/24/23	COMPUTER HARDWARE - Diversified Computer Systems	Period 8 of 10	4	-2%	-1%	0%	Weakened							<-Diversified Sys 4	<-Diversified Sys 4				
7 Days - 08/10/23 to 08/17/23	COMPUTER HARDWARE - Diversified Computer Systems	Period 9 of 10	4	-2%	-2%	4%	Unchanged							4 Diversified Sys					
7 Days - 08/03/23 to 08/10/23	COMPUTER HARDWARE - Diversified Computer Systems	Period 10 of 10	4	-1%	-4%	2%	Weakened							<-Diversified Sys 4	<-Diversified Sys 4	<-Diversified Sys 4			
7 Days - 10/05/23 to 10/12/23	COMPUTER HARDWARE - Networking & Communication Dev	Period 1 of 10 (Current)	11	-1%	1%	10%	Strengthened				11 Networking								
7 Days - 09/28/23 to 10/05/23	COMPUTER HARDWARE - Networking & Communication Dev	Period 2 of 10	11	-3%	-7%	7%	Weakened				11 Networking								
7 Days - 09/21/23 to 09/28/23	COMPUTER HARDWARE - Networking & Communication Dev	Period 3 of 10	11	-7%	1%	16%	Unchanged				11 Networking								
7 Days - 09/14/23 to 09/21/23	COMPUTER HARDWARE - Networking & Communication Dev	Period 4 of 10	11	-1%	-7%	-2%	Weakened				11 Networking								
7 Days - 09/07/23 to 09/14/23	COMPUTER HARDWARE - Networking & Communication Dev	Period 5 of 10	11	-3%	-2%	30%	Unchanged				11 Networking								
7 Days - 08/31/23 to 09/07/23	COMPUTER HARDWARE - Networking & Communication Dev	Period 6 of 10	11	-1%	-3%	4%	Weakened				11 Networking								
7 Days - 08/24/23 to 08/31/23	COMPUTER HARDWARE - Networking & Communication Dev	Period 7 of 10	11	-2%	-4%	9%	Strengthened				11 Networking								
7 Days - 08/17/23 to 08/24/23	COMPUTER HARDWARE - Networking & Communication Dev	Period 8 of 10	11	-1%	1%	13%	Unchanged				11 Networking								
7 Days - 08/10/23 to 08/17/23	COMPUTER HARDWARE - Networking & Communication Dev	Period 9 of 10	11	-1%	-4%	3%	Weakened				11 Networking								
7 Days - 08/03/23 to 08/10/23	COMPUTER HARDWARE - Networking & Communication Dev	Period 10 of 10	11	-1%	-3%	16%	Weakened				<-Networking 11	<-Networking 11							
7 Days - 10/05/23 to 10/12/23	COMPUTER HARDWARE - Personal Computers	Period 1 of 10 (Current)	1	-3%	3%	3%	Strengthened				1 PCs->	1 PCs->	1 PCs->						
7 Days - 09/28/23 to 10/05/23	COMPUTER HARDWARE - Personal Computers	Period 2 of 10	1	-2%	2%	2%	Unchanged				1 PCs								
7 Days - 09/21/23 to 09/28/23	COMPUTER HARDWARE - Personal Computers	Period 3 of 10	1	-4%	-2%	-2%	Unchanged				1 PCs								
7 Days - 09/14/23 to 09/21/23	COMPUTER HARDWARE - Personal Computers	Period 4 of 10	1	-1%	-1%	-1%	Unchanged				1 PCs								
7 Days - 09/07/23 to 09/14/23	COMPUTER HARDWARE - Personal Computers	Period 5 of 10	1	-1%	-1%	-1%	Unchanged				1 PCs								
7 Days - 08/31/23 to 09/07/23	COMPUTER HARDWARE - Personal Computers	Period 6 of 10	1	-3%	-5%	-5%	Weakened				<-PCs 1	<-PCs 1	<-PCs 1	<-PCs 1	<-PCs 1				
7 Days - 08/24/23 to 08/31/23	COMPUTER HARDWARE - Personal Computers	Period 7 of 10	1	-3%	-7%	7%	Strengthened				1 PCs->	1 PCs->	1 PCs->	1 PCs->	1 PCs->				
7 Days - 08/17/23 to 08/24/23	COMPUTER HARDWARE - Personal Computers	Period 8 of 10	1	-1%	1%	1%	Unchanged				1 PCs								
7 Days - 08/10/23 to 08/17/23	COMPUTER HARDWARE - Personal Computers	Period 9 of 10	1	-2%	-2%	-2%	Weakened				<-PCs 1	<-PCs 1	<-PCs 1						
7 Days - 08/03/23 to 08/10/23	COMPUTER HARDWARE - Personal Computers	Period 10 of 10	1	-7%	-7%	-7%	Weakened				<-PCs 1	<-PCs 1	<-PCs 1	<-PCs 1	<-PCs 1				

2C. Stocks 1 Week Strongest and Weakest

What: stocks currently rated Strongest/Weakest (highest/lowest of 9 strength ratings)

Why: most interesting stocks for available capital because

- the Strongest have the least amount of overhead supply to dampen breakouts while
- the Weakest may be prone to volatility, subject to big pops from bottom-fishing and short-covering BUT ALSO to bigger and faster falls.

(Not guaranteed and not a recommendation – weak stocks in weakening sub-industries may be better shorts than high-flyers.)

STOCK DETAIL (EDUCATIONAL PURPOSES ONLY/NOT FINANCIAL ADVICE)										1 week 10/05/23 to 10/12/23									
Length - Begin/End	Sub-Industry	Ticker	Company	Score	5yr	% Chg	Strength	Status		9Weakest	8VWeak	7Weaker	6Weak	5Avg	4Strong	3Stronger	2VStrong	1Strongest	
1 week 10/05/23 to 10/12/23	COMPUTER HARDWARE - Computer Based Systems	OMCL	Omniscell Inc	95-95-51	0%	-2%	-28%	9Weakest											
1 week 10/05/23 to 10/12/23	COMPUTER HARDWARE - Computer Peripherals	OLED	Universal Display Corporation	11-51-51	44%	5%	14%	1Strongest											OLED
1 week 10/05/23 to 10/12/23	COMPUTER HARDWARE - Computer Peripherals	LOGI	Logitech Intl Sa Ord	11-51-51	37%	2%	15%	1Strongest											LOGI-->
1 week 10/05/23 to 10/12/23	COMPUTER HARDWARE - Computer Peripherals	IMMR	Immercion Corporation	95-51-51	20%	1%	-7%	9Weakest											LOGI-->
1 week 10/05/23 to 10/12/23	COMPUTER HARDWARE - Computer Peripherals	RDCM	Radcom Ltd	95-51-51	33%	-2%	-13%	9Weakest											LOGI-->
1 week 10/05/23 to 10/12/23	COMPUTER HARDWARE - Computer Peripherals	CRSR	Corsair Gaming Inc	95-51-51	6%	-3%	-18%	9Weakest											
1 week 10/05/23 to 10/12/23	COMPUTER HARDWARE - Data Storage Devices	STX	Seagate Technology Holdings PLC	15-45-51	40%	4%	10%	1Strongest											STX
1 week 10/05/23 to 10/12/23	COMPUTER HARDWARE - Data Storage Devices	WDC	Western Digital Corp	15-45-51	34%	-1%	10%	1Strongest											WDC
1 week 10/05/23 to 10/12/23	COMPUTER HARDWARE - Data Storage Devices	GDS	GDS Holdings Ltd	95-45-51	2%	3%	-32%	9Weakest											
1 week 10/05/23 to 10/12/23	COMPUTER HARDWARE - Diversified Computer System	CDW	CDW Corporation	11-45-51	98%	4%	11%	1Strongest											CDW-->
1 week 10/05/23 to 10/12/23	COMPUTER HARDWARE - Diversified Computer System	ANET	Arista Networks Inc	15-45-51	97%	3%	22%	1Strongest											ANET
1 week 10/05/23 to 10/12/23	COMPUTER HARDWARE - Diversified Computer System	HPQ	Hp Inc	99-45-51	50%	2%	-10%	9Weakest											
1 week 10/05/23 to 10/12/23	COMPUTER HARDWARE - Networking & Communicat	PANW	Palo Alto Networks' Inc.	11-61-51	100%	10%	27%	1Strongest											PANW-->
1 week 10/05/23 to 10/12/23	COMPUTER HARDWARE - Networking & Communicat	CMBM	Cambium Networks Corporation	95-61-51	2%	3%	-66%	9Weakest											
1 week 10/05/23 to 10/12/23	COMPUTER HARDWARE - Networking & Communicat	LITE	Lumentum Holdings Inc	95-61-51	2%	1%	-19%	9Weakest											
1 week 10/05/23 to 10/12/23	COMPUTER HARDWARE - Networking & Communicat	JNPR	Juniper Networks	95-61-51	42%	-2%	-14%	9Weakest											
1 week 10/05/23 to 10/12/23	COMPUTER HARDWARE - Networking & Communicat	COMM	CommScope Holding Company Inc	95-61-51	0%	-2%	-52%	9Weakest											
1 week 10/05/23 to 10/12/23	COMPUTER HARDWARE - Networking & Communicat	DGII	Digi International Inc	95-61-51	50%	-2%	-27%	9Weakest											
1 week 10/05/23 to 10/12/23	COMPUTER HARDWARE - Networking & Communicat	SILC	Silicom Ltd	95-61-51	3%	-11%	-34%	9Weakest											

Strongest to Weakest stocks ratio is 7:12 (22% and 38% of total) 10/05/23 to 10/12/23.

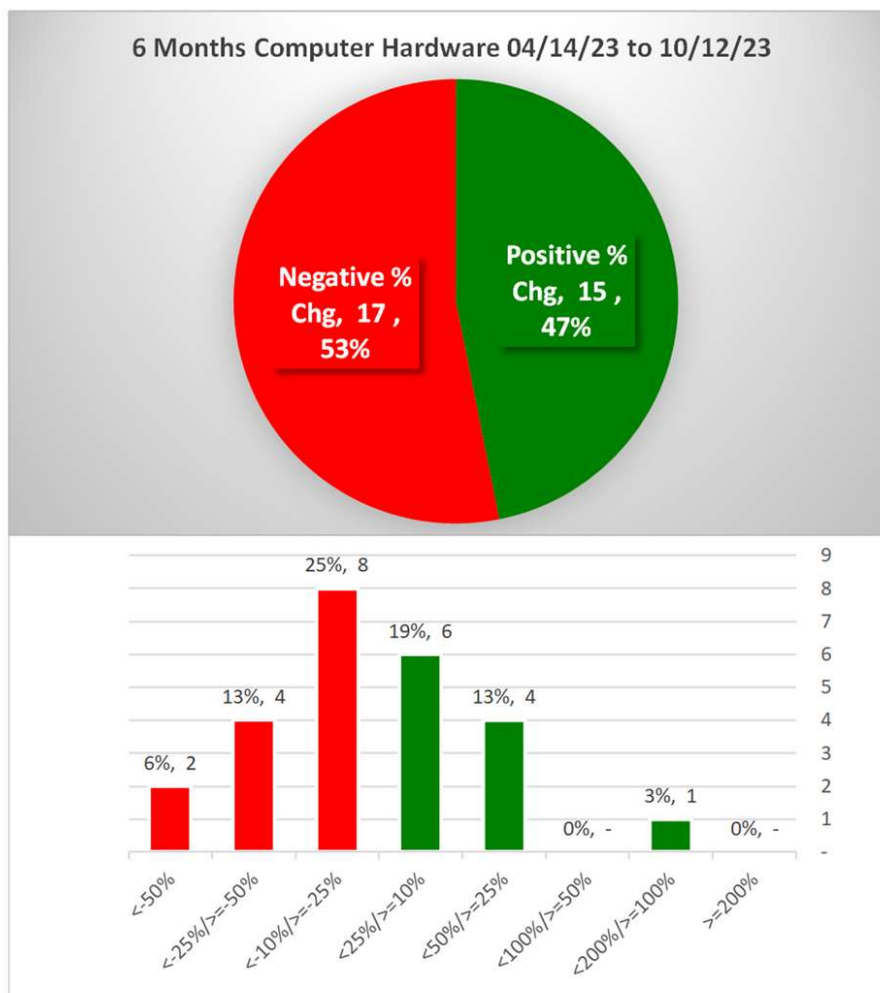
Green Highlight: Strengthened

Red Highlight: Weakened

No Highlight: Unchanged

3. STRENGTH BY LOOKBACK PERIOD (with Best/Worst stocks)

3A. Lookback 6 Months

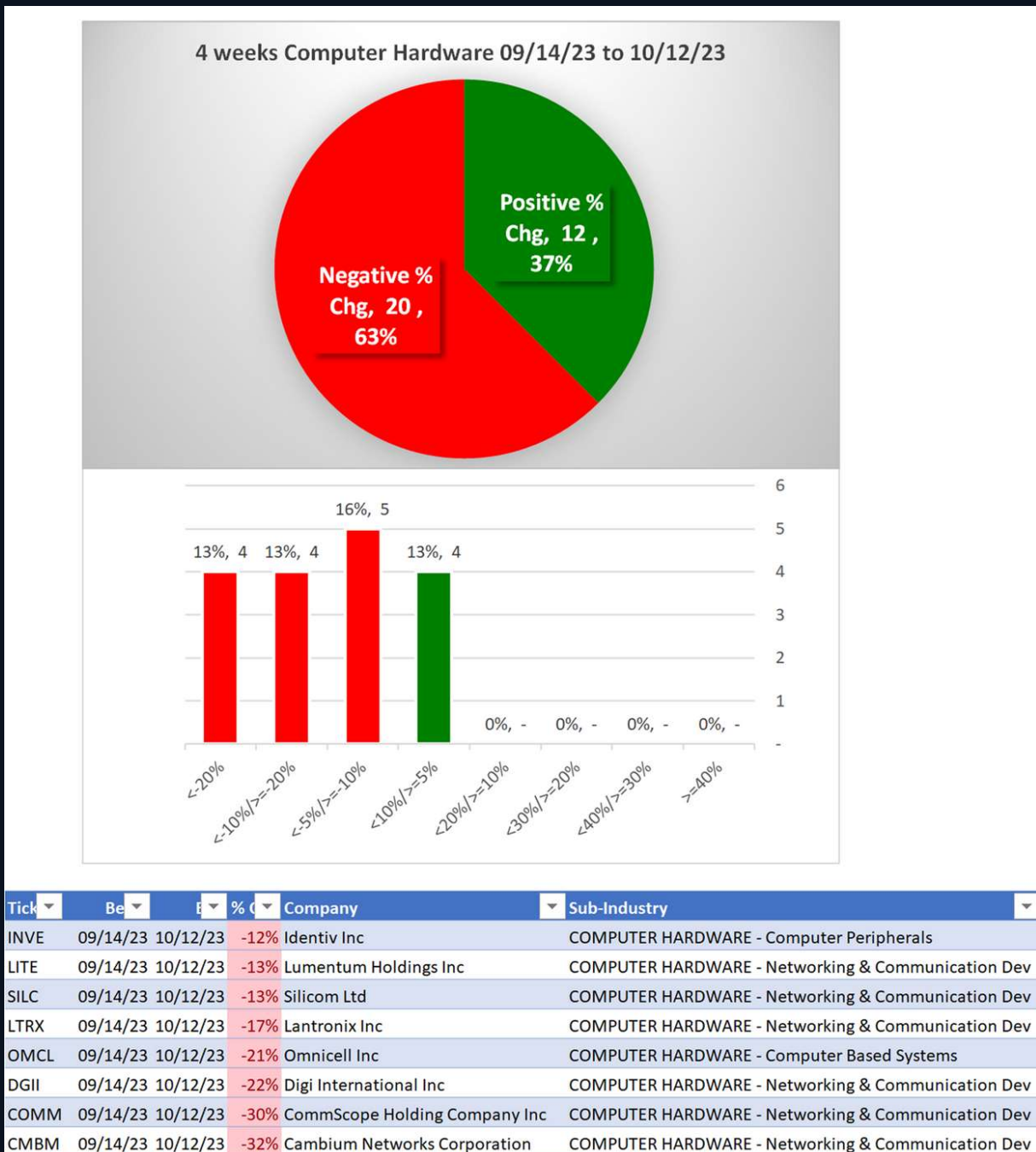


Tick	Be	E	% C	Company	Sub-Industry
SMCI	04/14/23	10/12/23	169%	Super Micro Computer Inc	COMPUTER HARDWARE - Networking & Communication Dev
DGII	04/14/23	10/12/23	-27%	Digi International Inc	COMPUTER HARDWARE - Networking & Communication Dev
OMCL	04/14/23	10/12/23	-28%	Omniceil Inc	COMPUTER HARDWARE - Computer Based Systems
SILC	04/14/23	10/12/23	-36%	Silicom Ltd	COMPUTER HARDWARE - Networking & Communication Dev
GDS	04/14/23	10/12/23	-38%	GDS Holdings Ltd	COMPUTER HARDWARE - Data Storage Devices
COMM	04/14/23	10/12/23	-52%	CommScope Holding Company Inc	COMPUTER HARDWARE - Networking & Communication Dev
CMBM	04/14/23	10/12/23	-69%	Cambium Networks Corporation	COMPUTER HARDWARE - Networking & Communication Dev

1 stock > +50% and 6 stocks < -25% (3% and 19% of total) 04/14/23 to 10/12/23.

3. STRENGTH BY LOOKBACK PERIOD (with Best/Worst stocks)

3B. Lookback 4 Weeks



0 stocks >+10% and 8 stocks <-10% (0% and 25% of total) 09/14/23 to 10/12/23.

3. STRENGTH BY LOOKBACK PERIOD (with Best/Worst stocks)

3C. Lookback 1 Week

